

# Kabelloses Ultraschall System

POCKET ULTRASOUND SYSTEM



## D8



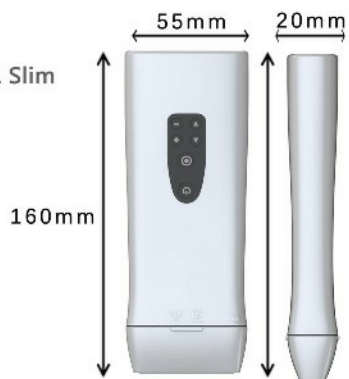
Wechselbare Sondenköpfe



220g **S** Super Small & Slim

IPX6

≥8H Scan Time



Indicator Light



Easy to Transport



All Detachable Transducers



Windows, iOS, Android

WiFi USB WiFi & USB

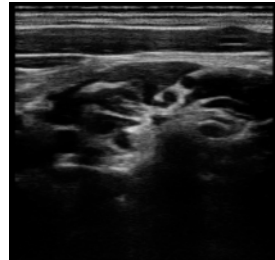


# Technische Spezifikationen

- Plattform:** \_\_\_\_\_ Android, Windows, IOS
- Verbindungen:** \_\_\_\_\_ Wireless basierend auf WiFi-direkt & USB
- Unterstützende Geräte:** \_\_\_\_\_ Android basiertes Tablet oder Smartphone, Windows PC, iPhone und IPAD.
- Modes:** \_\_\_\_\_ B, M, 2B, 4B, THI, Color, Power, PW  
(nur Farbdoppler-Version hat Color, Power, PW)
- Graustufen:** \_\_\_\_\_ 256
- Schallkopf-Frequenzen:** \_\_\_\_\_ 2-11 MHz
- Digitale Technologie:** \_\_\_\_\_ Wide-angle imaging  
Panoramic focusing technology  
Compatible with high and low speed blood  
Frequency compounding  
Space compounding  
Rolling M technology  
Real-time Dynamic Aperture  
Tissue Harmonic Imaging  
Tissue Specific Imaging
- Max Schalltiefe:** \_\_\_\_\_ 300mm

## Imaging Processing

- Pre-processing:** \_\_\_\_\_ Cloud processing technology  
Fine blood flow imaging, high sensitivity  
Gain  
Dynamic range  
Persistence  
M Soften  
Noise suppression
- Post-processing:** \_\_\_\_\_ Image enhancement  
Gray map  
Pseudo color map  
Interface rotation  
Left/right reverse  
Up/down reverse



## Funktionen

- Cine-loop:** \_\_\_\_\_ 600 frames movie playback stored
- Zoom:** \_\_\_\_\_ Max 10 times (only Windows) **Qopt:** One-key Optimierung
- DICOM:** \_\_\_\_\_ DICOM 3.0 (only Windows)
- Other function:** \_\_\_\_\_ Patient information Management (only Windows)
- Applikationen:** \_\_\_\_\_ Abdomen, Small Parts, Vaskular, Geburtshilfe, Gynäkologie, Cardiologie, Neurologie, Urologie, Orthopädie, Anästhesie, Pädiatrie, Chirurgie, HNO, Notfallmedizin, Onkologie, Physiotherapie, Rheumatologie, Veterinärmedizin





## Alle Arten von wechselbaren Sonden werden unterstützt!



Probe Model: Convex  
Central Freq: 3.5MHz  
Freq. Range: 2.5— 5.0MHz  
Application: Abdomen,  
Gynecology Obstetrics,  
Urology



Probe Model: Linear  
Central Freq: 7.5MHz  
Freq. Range: 6.0—11.0MHz  
Application: Vascular,  
Small Parts, MSK,  
Anesthesia, Orthopedic



Probe Model: Small Linear  
Central Freq: 7.5MHz  
Freq. Range: 6.0—11.0MHz  
Application: Vascular,  
Small Parts, Nerve, MSK,  
Anesthesia, Orthopedic



Probe Model:  
Micro-Convex  
Central Freq: 6.0MHz  
Freq. Range: 5.0— 9.0MHz  
Application: Abdomen,  
Kidney, Neonatal  
Cardiology, Small Animals



Probe Model: Phased  
Array  
Central Freq: 2.5MHz  
Freq. Range: 1.6— 3.2MHz  
Application: Cardiology  
Demnächst verfügbar!



Probe Model: Transvaginal  
Central Freq: 6.5MHz  
Freq. Range: 5.0— 8.5MHz  
Application: Gynecology,  
Obstetrics, Urology

Erster kabelloser Ultraschall, um alles zu verbinden

**MEDELO**  
MEDIZIN  
TECHNIK

**MEDELO Michael Longen e.K.**  
 Im Gewerbegebiet 34 54344 Kenn  
 Tel. +49 (0) 6502 92 24 0  
 Mail info@medelo.de  
 Web www.medelo.de  
**PRAXISBEDARF + MEDIZINTECHNIK + SERVICE**